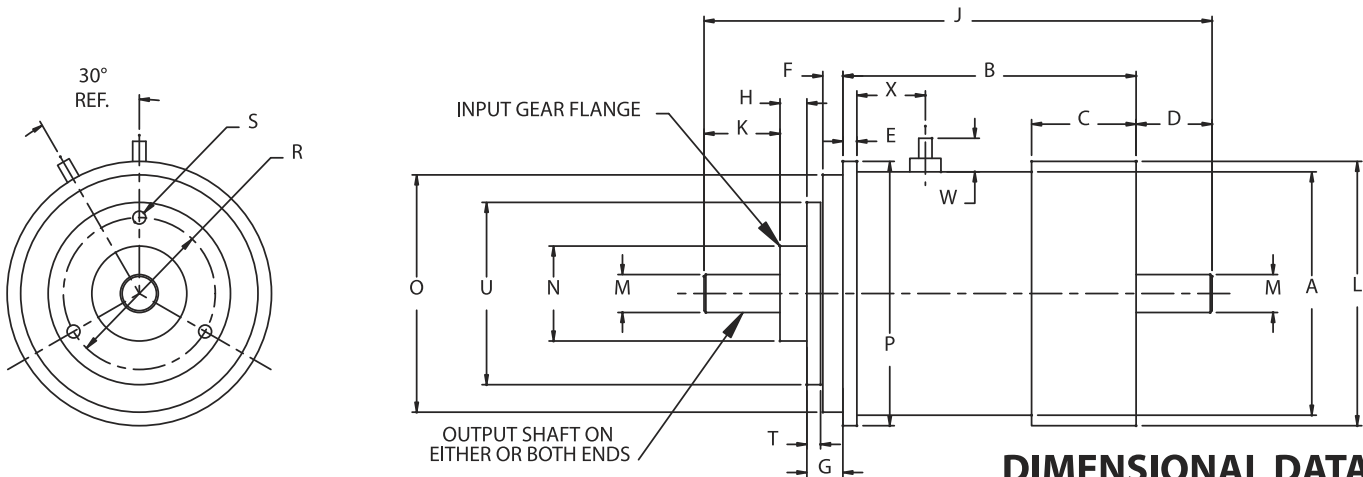




**SPECIFICATIONS**

		C-4	C-6	C-8	C-10	C-12
Weight (Nominal)	Oz.	0.8	2.4	4.9	8.2	15.0
Volts	D.C.	24 to 28	24 to 28	24 to 28	24 to 28	24 to 28
Coil Resistance ±10%	Ohms	246.0	193.0	169.0	150.0	144.0
Clutch Torque Minimum @ 24 V.D.C.	Oz. In.	6.0	26.0	64.0	100.0	256.0
Response Time @ 28 V.D.C. (Energize)	MS Nom.	5.0	11.0	13.0	17.0	34.0
Maximum No Load Torque (Drag) Energized	Oz. In.	.05	.25	.40	.50	1.0
Maximum No Load Torque (Drag) De-energized	Oz. In.	.05	.10	.15	.20	1.0
Polar Moment of Inertia - Input Gear Flange	In. Lb. Sec <sup>2</sup>	.48 x 10 <sup>-6</sup>	3.8 x 10 <sup>-6</sup>	11.5 x 10 <sup>-6</sup>	20.2 x 10 <sup>-6</sup>	91.1 x 10 <sup>-6</sup>
Polar Moment of Inertia - Output Shaft	In. Lb. Sec <sup>2</sup>	.30 x 10 <sup>-6</sup>	1.2 x 10 <sup>-6</sup>	6.1 x 10 <sup>-6</sup>	11.7 x 10 <sup>-6</sup>	66.8 x 10 <sup>-6</sup>



**DIMENSIONAL DATA**

	A	B	C	D	E	F	G	H	J	K	L	M*	N*	O*	P	R	S	T	U	W	X
Model	±.010	±.015	±.010	±.020	+.003 -.000	±.005	±.005	±.005	±.015	±.020	±.005	+.0000 -.0005	+.0000 -.0005	+.0000 -.0005	+.000 -.005	±.005	<b>2B THD</b>	±.002	±.005	REF	REF
C-4	.531	.882	.304	.300	.047	.060	.125	.079	1.686	.300	.578	.0935	.2190	.5000	.594	.344	#0-80	.056	.450	.150	.245
C-6	.750	1.240	.360	.300	.060	.100	.170	.120	2.130	.300	.796	.1248	.3750	.7500	.827	.625	#2-56	.061	.740	.229	.368
C-8	1.000	1.485	.411	.375	.060	.100	.177	.177	2.589	.375	1.080	.1248	.5000	1.0000	1.090	.750	#2-56	.064	.934	.224	.431
C-10	1.250	1.620	.452	.375	.060	.125	.203	.177	2.750	.375	1.350	.1873	.5000	1.2500	1.370	.750	#2-56	.064	.934	.221	.387
C-12	1.562	1.930	.688	.500	.092	.132	.237	.177	3.344	.500	1.680	.2498	.6250	1.5620	1.740	1.000	#2-56	.090	1.200	.221	.451

\* Concentric within .0015 T.I.R.

**ISO 9001:2015 and AS9100D**

We Are Your Source for Custom, American Made Precision Miniature Electromagnetic Clutches, Brakes, Solenoids, and Torque Indicators.