

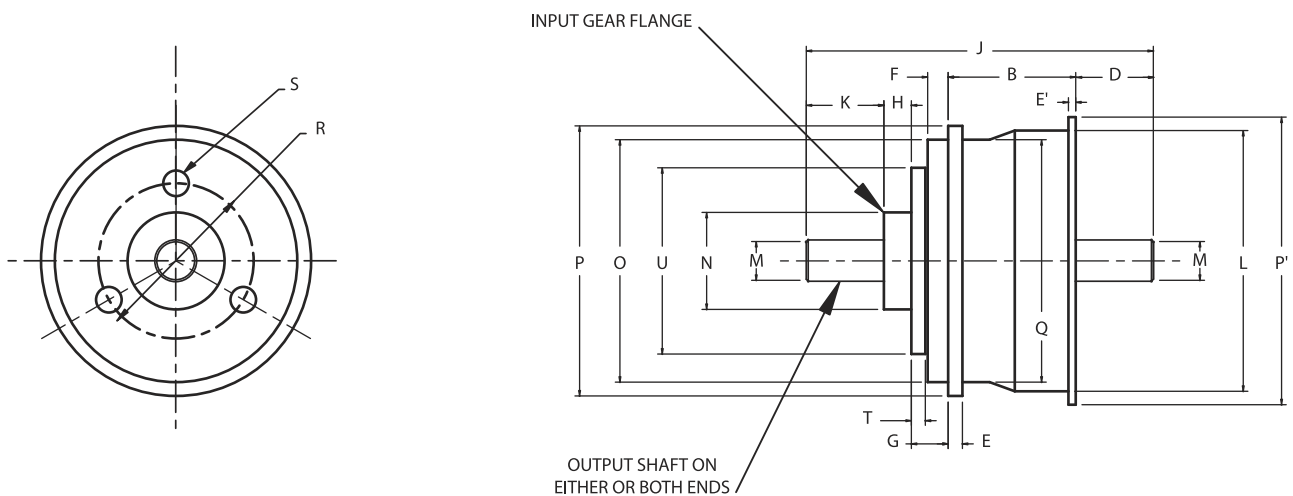


MECHANICAL SLIP CLUTCH



SPECIFICATIONS

		SC-4	SC-6	SC-8	SC-10	SC-12
Weight (Nominal)	(Oz.)	.4	1.0	1.8	2.5	6.0
Torque Range	(Oz. In.)	.8 to 4.0	1 to 12	6 to 24	18 to 54	36 to 70
Maximum No Load Drag	(Oz. In.)	.10	.20	.40	.60	1.0
Polar Moment of Inertia - calculated	(In. Lb. Sec ²)	0.8×10^{-6}	3.4×10^{-6}	10.4×10^{-6}	20.4×10^{-6}	86.0×10^{-6}



DIMENSIONAL DATA

	B	D	E	E'	F	G	H	J	K	L	M*	N*	O*	P	P'	Q	R	S	T	U
Model	±.015	±.020	+0.003 -.000	±.010	±.005	±.005	±.005	±.015	±.020	±.005	+0.000 -0.005	+0.000 -0.005	+0.000 -0.005	+0.00 -0.05	+0.00 -0.05	+0.00 -0.05	±.005	2B THD	±.002	±.005
SC-4	.392	.300	.047	.047	.060	.125	.079	1.196	.300	.578	.0935	.2190	.5000	.594	.648	.530	.344	#0-80	.056	.450
SC-6	.450	.300	.060	.047	.100	.170	.120	1.340	.300	.796	.1248	.3750	.7500	.827	.866	.750	.625	#2-56	.061	.740
SC-8	.531	.375	.060	.047	.015	.177	.177	1.635	.375	1.080	.1248	.5000	1.0000	1.090	1.150	1.000	.750	#2-56	.064	.934
SC-10	.557	.375	.060	.047	.125	.203	.177	1.687	.375	1.350	.1873	.5000	1.2500	1.370	1.420	1.250	.750	#2-56	.064	.934
SC-12	.822	.500	.092	.047	.132	.237	.177	2.236	.500	1.680	.2498	.6250	1.5620	1.740	1.853	1.562	1.000	#2-56	.090	1.200

* Concentric within .0015 T.I.R.

ISO 9001:2015 and AS9100D

We Are Your Source for Custom, American Made Precision Miniature Electromagnetic Clutches, Brakes, Solenoids, and Torque Indicators.