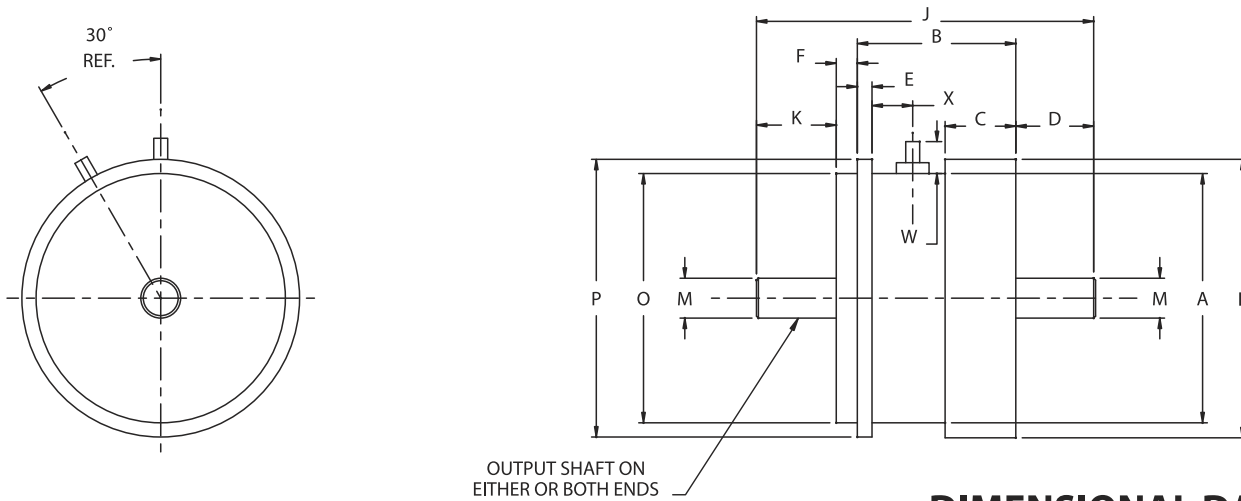




SPECIFICATIONS

		BF-26	BF-28	BF-30	BF-32	BF-34
Weight (Nominal)	<i>Oz.</i>	1.0	1.8	3.5	6.0	9.0
Volts	<i>D.C.</i>	24 to 28	24 to 28	24 to 28	24 to 28	24 to 28
Coil Resistance $\pm 10\%$	<i>Ohms</i>	275.0	169.0	165.0	151.0	138.0
Brake Torque Minimum	<i>Oz. In.</i>	5.0	12.0	16.0	32.0	100.0
Response Time @ 28 V.D.C. (Energize)	<i>MS Nom.</i>	7.0	7.0	10.0	14.0	20.0
Maximum No Load Torque (Drag) Energized	<i>Oz. In.</i>	.20	.20	.40	.60	.80
Polar Moment of Inertia - Output Shaft	<i>In. Lb. Sec²</i>	2.5×10^{-6}	8.5×10^{-6}	17.7×10^{-6}	63.4×10^{-6}	109.3×10^{-6}



DIMENSIONAL DATA

	A	B	C	D	E	F	J	K	L	M*	O*	P	W	X
Model	$\pm .010$	$\pm .015$	$\pm .010$	$\pm .020$	$+.003$ $-.000$	$\pm .005$	$\pm .015$	$\pm .020$	$\pm .005$	$+.0000$ $-.0005$	$+.0000$ $-.0005$	$+.000$ $-.005$	REF	REF
BF-26	.800	.500	.285	.300	.047	.100	1.200	.300	.845	.1248	.7500	.877	.220	.065
BF-28	1.025	.500	.280	.300	.060	.100	1.200	.300	1.105	.1248	1.0000	1.115	.230	.065
BF-30	1.250	.625	.375	.375	.060	.125	1.500	.375	1.350	.1873	1.2500	1.370	.218	.065
BF-32	1.500	.750	.450	.500	.060	.125	1.875	.500	1.600	.2498	1.5000	1.620	.210	.065
BF-34	1.650	1.000	.450	.500	.090	.125	2.125	.500	1.745	.2498	1.5620	1.740	.200	.255

* Concentric within .0015 T.I.R.

ISO 9001:2015 and AS9100D

We Are Your Source for Custom, American Made Precision Miniature Electromagnetic Clutches, Brakes, Solenoids, and Torque Indicators.